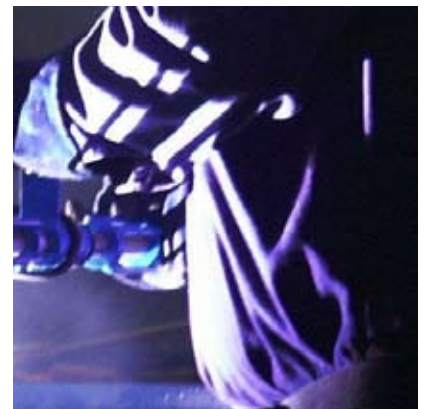
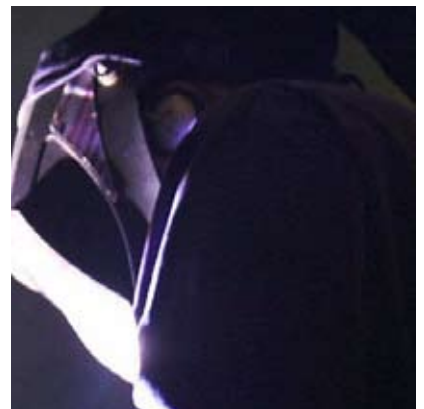


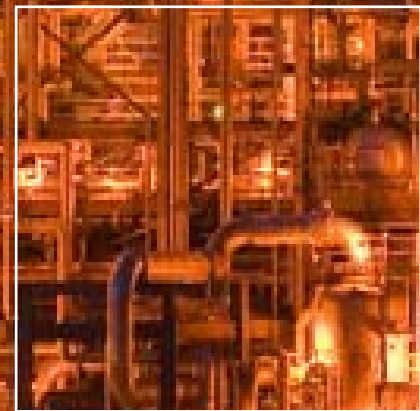
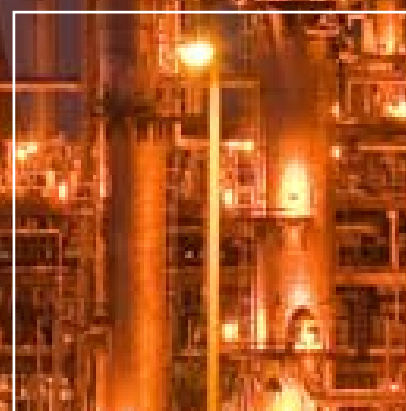
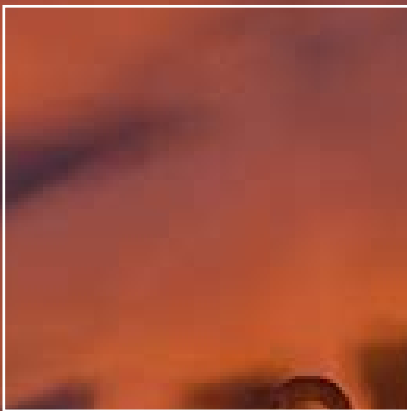
RPS

eVision
Industry Software

RPS implementing eVision's leading Permit To Work system



RPS' breadth of experience in the energy and resources sector spans three decades. Our clients include multinational, national, independent energy and resources companies, government, independent operators, engineering, and construction companies, industry associations, seismic data acquisition contractors and other infrastructure and asset owners.



RPS and eVision

RPS is an international consultancy providing world-class local solutions in energy and resources, infrastructure, environment and urban growth.

RPS delivers a comprehensive range of HSE and risk management services to assist our clients in conducting business that is efficient, safe and sustainable.

RPS has significant experience in the HSE regulatory field in Australia and overseas and provides consultancy services to a variety of industrial sectors including onshore and offshore activities (brownfield/greenfield).

Our HSE and risk management services cover the full project lifecycle from design through to construction, commissioning operations and decommissioning.



eVision Industry Software is an international software development company designing world-class operational safety solutions.

eVision Industry Software works together with senior management and front line operational staff of global oil and gas corporations, petrochemical companies and in other hazardous industries, improving safety and efficiency by implementing innovative operational safety systems.

eVision's success is based on the combination of highly skilled software designers teamed up with industry people - HSE managers, operations managers and installation managers. eVision's software is straightforward and easy to use.

eVision's software systems realise greater organisational efficiency and effectiveness, yielding improvements in both safety and cost reduction. Part of eVision's operational safety framework is the leading Permit To Work software system: Permit Vision.

CH4 J6A

HSN

eVision works for many of the large oil majors and petrochemical companies implementing eVision's Permit Vision software, integrating Task Risk Assessment, dangerous goods management, isolation management and Permit To Work into one Integrated Operational Safety Environment.



Permit To Work capabilities

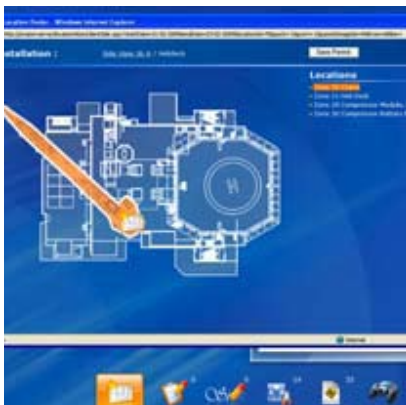
Efficient, safe scheduling of work is considered 'safety critical' to organisations and regulatory bodies alike.

RPS has extensive experience in providing independent advice and support to organisations in establishing and maintaining effective formal processes and systems to control work. We are familiar with the challenges clients commonly face and draw on a combination of in-house industry knowledge, regulatory requirements, industry standards, and lessons learnt from previous incidents to provide tailored solutions.

In addition, RPS understands the inherent links between Process Control Systems/Safety Instrumented Systems, Lock-Out/Tag-Out Processes and Maintenance Systems. Our Permit To Work system is designed to interact with and streamline processes, while maintaining a high focus on process and personnel safety.

RPS understands the links to risk assessment processes, emergency response requirements, and associated procedures, such as hot work, confined space entry and working at height.

RPS' international experience has also helped us develop innovative solutions to meet the challenges of literacy and numeracy amongst multilingual workforces.



Electronic Permit To Work: Permit Vision

Permit To Work software has previously been separated from risk assessment, isolations management processes and dangerous goods management. eVision have now integrated these into one single safe system of work. The integration and realisation of these processes builds greater organisational efficiency and effectiveness.

Benefits of Permit Vision

- focus on risk assessment;
- more thorough process;
- improved cost efficiency;
- improved communication;
- improved archiving;
- lessons learnt; and
- direct overview of all work carried out on all assets.

Permit Vision is one of eVision's leading products. Permit Vision makes the transition from the old hard-copy method of PTW to a new digital solution. The Permit Vision solution supports several standards and guidelines. Moreover, we can adapt our software solutions to support your industry or company's local standards and requirements.

Permit To Work

Permit To Work is a proven best-practice method to ensure safety on hazardous worksites.

Before maintenance or other work can be done, a PTW form has to be issued. Previously, PTW forms only existed in hard copy. Our industry protocols and safety measures have expanded. Business processes have become more complex. Hard copy forms create a paper trail, not a safety process. When this control over safety management is lost, the risks increase. Permit Vision allows a restored focus on safety through control over whole facilities in a manageable process.

Permit To Work and Permit Vision

Permit Vision digitalises the former hard-copy PTW forms using in-house designs. Not only does this ease the administrative burden, it allows technology to aid users. Using web-based technology, PTW forms can be monitored and issued from any location, on and off-shore. This allows control centres to gain a real-time update on all work being done, anywhere, anytime. Moreover, by providing a unique user-friendly interface, the risk for human errors is minimised.

Through imbedded instructions that adopt standards and facility considerations, human error is minimised and safety precautions are taken.





eVision
Industry Software

Efficiency

User-friendly presentation simplifies the creation, authorisation and issue of all Permit To Work requirements.

Control

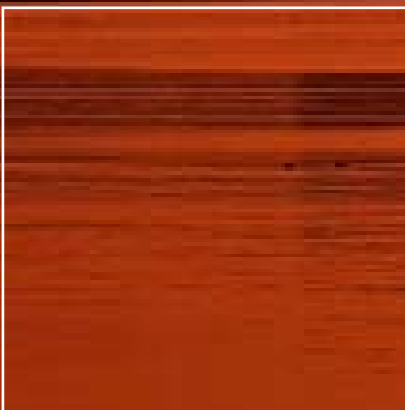
Rule-based structure within a defined authorisation process and flexible analysis functions deliver 'real time' management information.

Productivity

Easy creation of a permit, bringing cost benefits by replacing cumbersome paper-based systems.

Compliance

Safety checks and 'alert' functionality ensures improved legislative and 'best-practice' compliance, thus reducing risk and maximising safety.



"Our goal and pride is to deliver simple and practical solutions to complex 'real world' problems"

Neil Currie

Product Manager, eVision

Management system and regulatory compliance

Through RPS' extensive work in the safety industry with clients who operate 'Major Hazard Facilities' or fall under the 'Safety Case' regimes, RPS are specialists in compliance requirements.

Permit To Work systems designed by RPS and eVision are intended to ensure compliance to internal management system requirements and to regulatory requirements by:

- Establishing safe working practices and eliminating common PTW problems such as human error; shift handovers, fatigue and poor job safety analysis;
- Maintaining a safe system of work throughout changing conditions and environments using pre-defined rule sets to avoid conflicts and manage simultaneous operations; and
- Demonstrating that work is being controlled to As Low As Reasonably Practicable (ALARP) to meet internal management system requirements as a demonstration of compliance to the regulator.

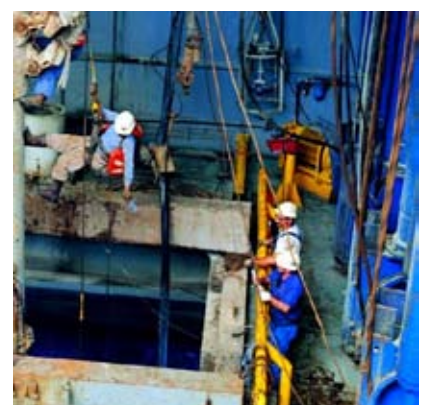
Permit To Work services

RPS provides a range of services tailored to meet the Permit To Work needs of our clients including:

- Assistance in making a 'Step Change' in PTW processes and building an effective safety culture;
- The review/benchmarking (i.e. Gap Analysis or auditing) of existing PTW systems;
- Design of new integrated PTW systems and associated supporting management system procedures;
- Development and rollout of tailored (tiered) training;
- Audit and monitoring of existing or new PTW systems; and
- Supply of skilled personnel to assist in managing peak workloads.

What guidance is needed?

RPS and eVision use guidance from a range of regulatory agencies and industry bodies internationally such as UK HSE, HSG250, HSG253, NOGEP, OIAC, OGP, API, APPEA, AS/NZS and NEN/ISO Standards.





eVision
Industry Software

eVision and RPS have combined their skills to implement Permit To Work software while optimising frontline work execution. Using PermitVision, RPS and eVision design a new PTW system or convert any existing company paper standards and procedures into an easy to use, practical software system that uses best practice methods to integrate with graphical overviews, risk assessment, LOTO and inhibit management.





Contacts



RPS Perth Office
 Paul Clothier
 Level 3, 38 Station Street,
 Subiaco, Western Australia 6008
 Australia
T + 61 8 9211 1111
F + 61 8 9211 1122
E hserm@rpsgroup.com.au

eVision Global Headquarters
 Neil Currie
 Mauritskade 33 2514 HD,
 The Hague The Netherlands
T +31 70 3626126
E info@evision-software.nl